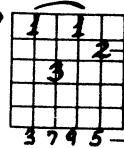


# • EXPLANATION OF MUSICAL NOTATION


- A Chord symbol
- B Fret number
- C Finger number
- D Chord construction (intervals)
- E Chord notation
- F Number next to chord form indicates the corresponding example progression.

F ——— 3) **CMA9** — A

B ——— ?  C

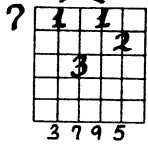
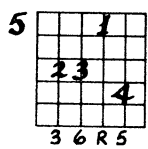
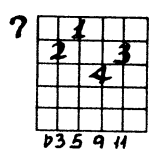
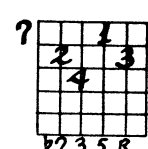
D

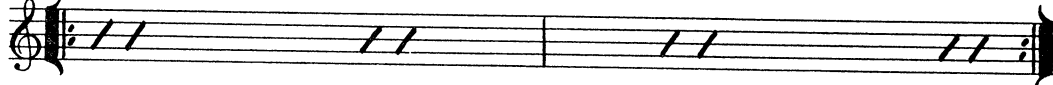
E



F

3) **CMA9** **C6** **Dm11** **G7**

?    



# • EXPLANATION OF MUSICAL SYMBOLS

## • CHORD NAME SYMBOL

- Ma = major
- m = minor
- Ma7 = major 7
- dim = diminished
- + = augmented
- = flatted (b)

## • CHORD CONSTRUCTION (INTERVALS) SYMBOLS

- R = root
- b7 = dominant seventh
- 7 = major seventh

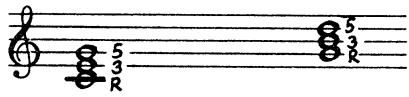
## • FINGERING SYMBOLS

 = barre the string

• Keyboard Analysis:

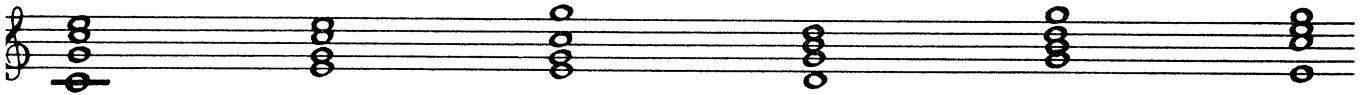
CMA GMA

- Have a friend play the root note in the bass in order to hear the complete chord.

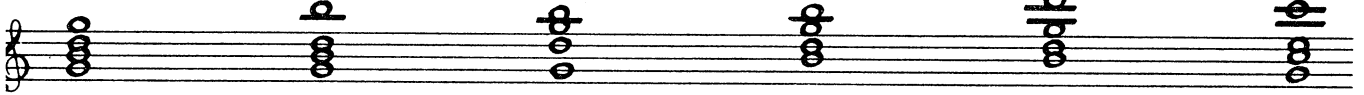


**CHORD FORMS**

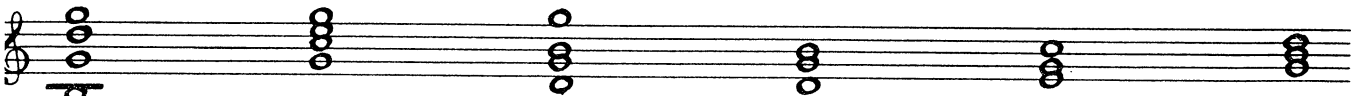
1) C 2) C 3) C 4) G 5) G 6) C



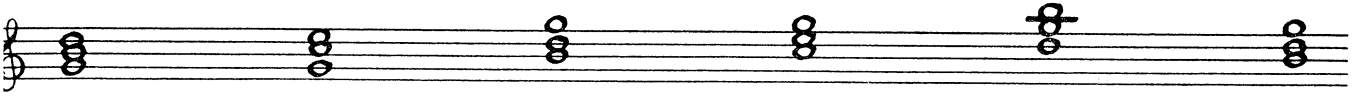
7) G 8) G 9) G 10) G 11) G 12) C



13) G 14) C 15) G 16) G 17) C 18) G



19) G 20) C 21) G 22) C 23) G 24) G



# • BASIC MAJOR EXAMPLES

- • Have a friend play the root note in the bass in order to hear the complete chord.

1) **C**      **Dm7**      **G**

R 5 R 3      5 b3 b7 b3      3 R 5 R

2) **C**      **Am7**      **Dm7**      **G7**

3 5 R 3      R b7 b3 5      R 5 b7 b3      5 R 3 b7

3) **C**      **Am**      **Dm7**      **G7**

3 5 R 5      R b3 5 b3      R 5 b7 b3      R 5 b7 3

4) **G**      **G+**      **G6**      **G+**      **G**

5 R 3 5      #5 R 3 #5      5 R 3 6      #5 R 3 #5      5 R 3 5

5) **G** **Em7** **Am7** **D7** **G**

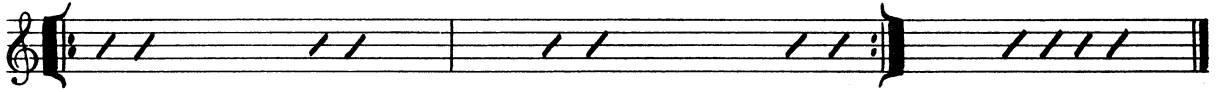
7 R 3 5 R

7 R 5 b7 b3

5 5 b7 b3 b7

5 R 5 b7 3

7 R 3 5 R



6) **Fm** **C** **Fm** **C7**

8 R 5 R b3

7 3 R 3 5

5 R b3 5 R

3 R 5 b7 3



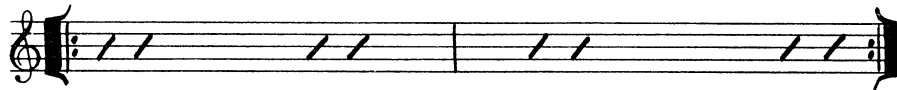
7) **G** **Em** **Am9** **D9**

3 R 3 5 R

3 b3 5 R b3

5 b7 b3 5 9

4 3 b7 9 5



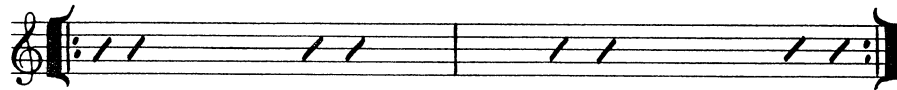
8) **G** **G+** **G6** **G+**

3 R 3 5 3

4 R 3 #5 3

4 R 3 6 3

4 R 3 #5 3



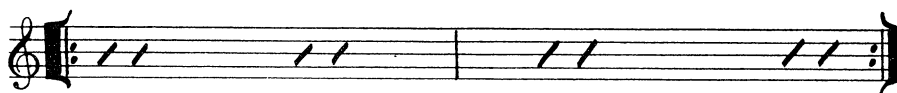
9) **G** **GMA7** **G6** **GMA7**

5 R 5 R 3

5 R 5 7 3

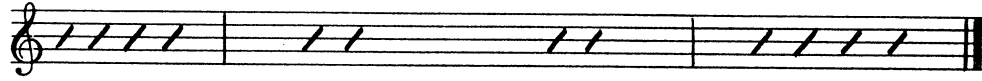
5 R 5 6 3

5 R 5 7 3



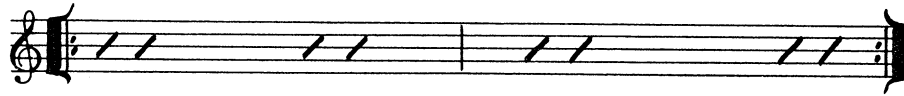
10) **G** **Am7** **D7** **G**

7 3 5 R 3      8 b3 5 b7 b3      10 b7 3 5 R      7 3 5 R 3



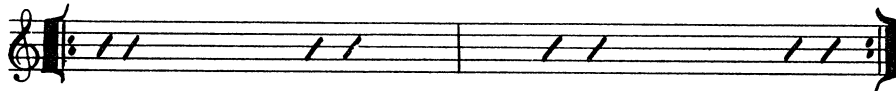
11) **G** **Em** **Am** **D9**

7 3 5 R 5      7 5 R b3 5      7 R 5 R b3      9 3 b7 9 5



12) **C** **Am** **Dm7** **G7**

5 5 R 3 R      5 R b3 5 b3      6 5 R b3 b7      5 R 5 b7 3



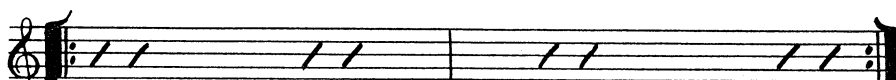
13) **G** **Em7** **Am7** **D7**

5 3 R 5 R      5 R b3 b7 b3      5 5 R b3 b7      5 R 5 b7 3

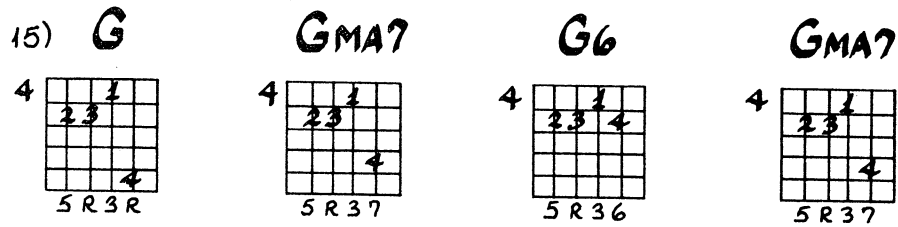


14) **C** **C6** **Dm7** **G7**

3 5 R 3 5      5 5 R 3 6      5 5 b7 b3 5      5 R 5 b7 3



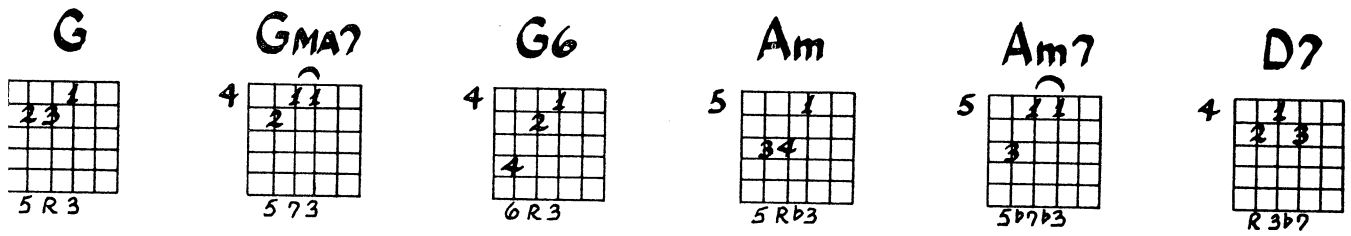
15) **G**      **GMA7**      **G6**      **GMA7**



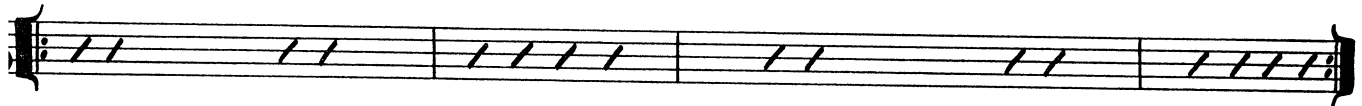
5 R 3 R      5 R 3 7      5 R 3 6      5 R 3 7



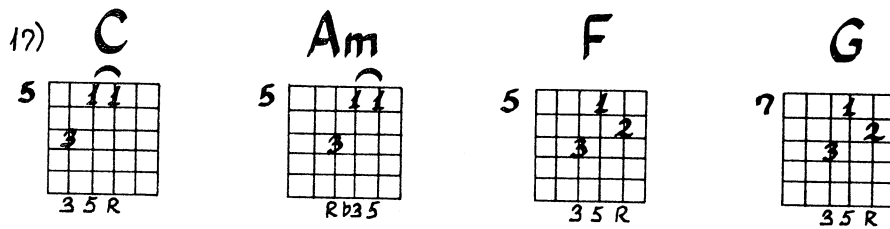
**G**      **GMA7**      **G6**      **Am**      **Am7**      **D7**



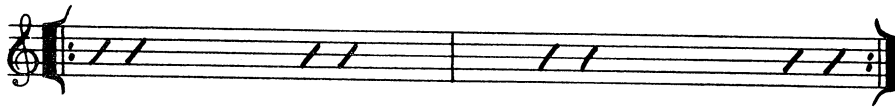
5 R 3      5 7 3      6 R 3      5 R b3      5 b7 b3      R b3 7



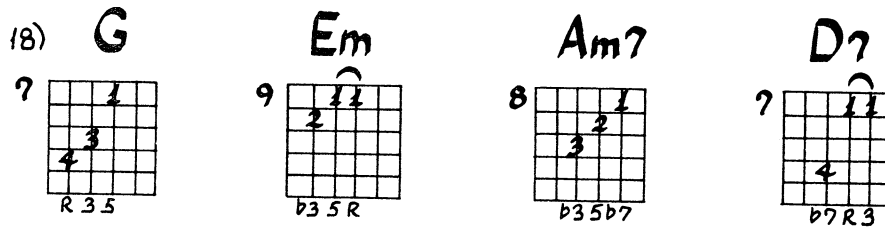
17) **C**      **Am**      **F**      **G**



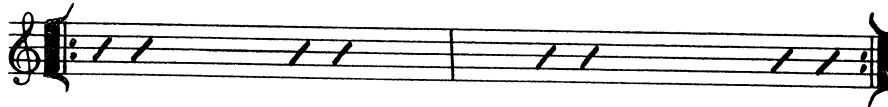
3 5 R      R b3 5      3 5 R      3 5 R



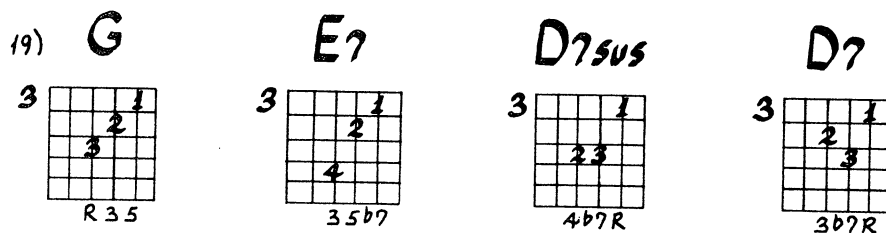
18) **G**      **Em**      **Am7**      **D7**



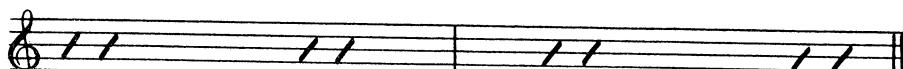
R 3 5      b3 5 R      b3 5 b7      b7 R 3

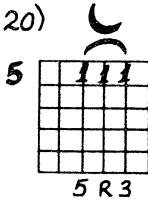
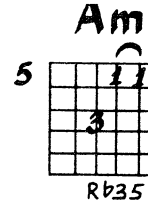
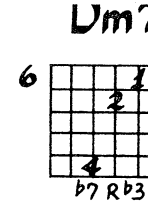
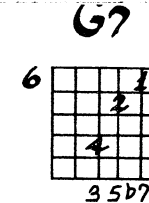



19) **G**      **E7**      **D7sus**      **D7**

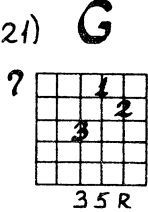
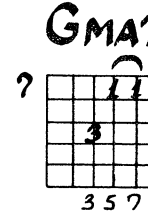
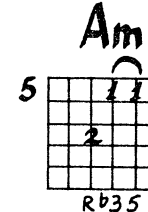
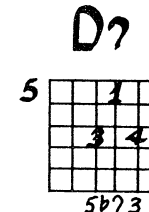


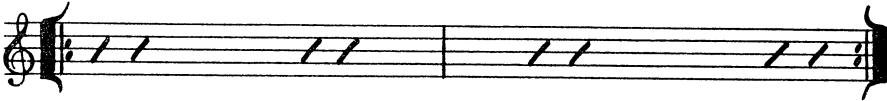
R 3 5      3 5 b7      4 b7 R      3 b7 R

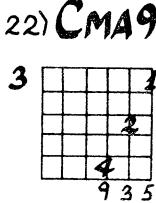
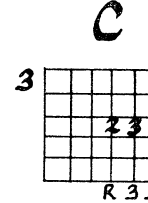
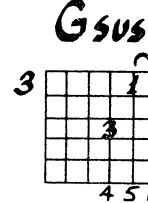
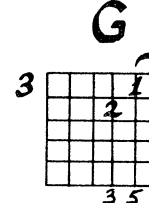


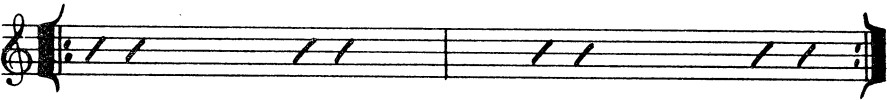
20)    

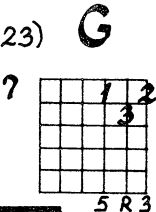
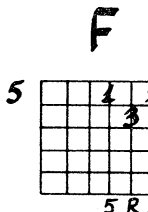
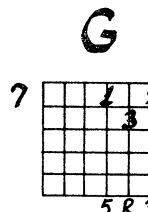
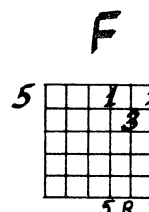


21)    

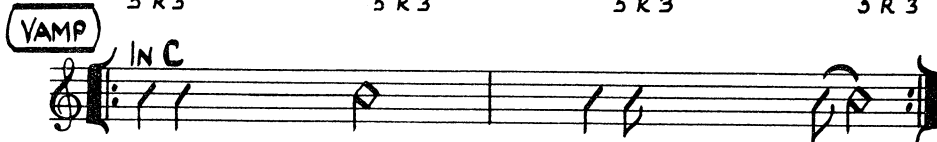


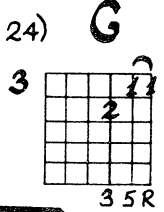
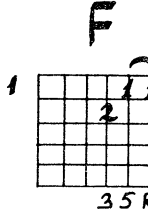
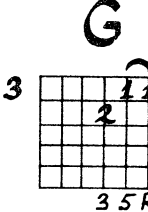
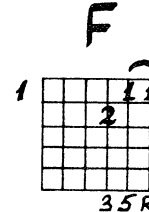
22)    



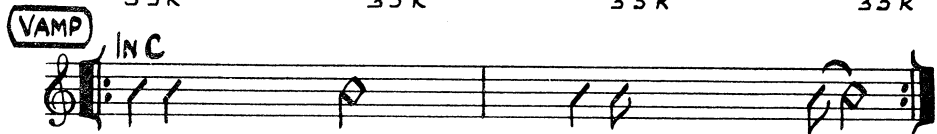
23)    

**VAMP** **INC**



24)    

**VAMP** **INC**

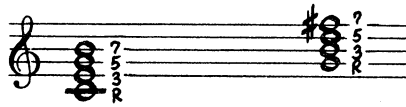


# ● MAJOR 7

● Keyboard Analysis:

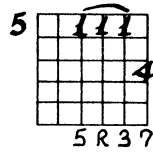
CMA7

GMA7

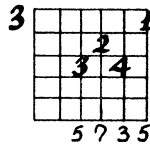


## CHORD FORMS

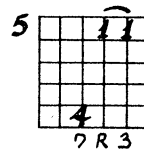
1) CMA7



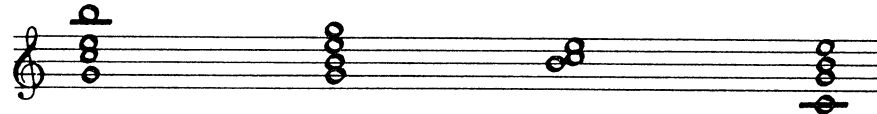
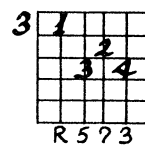
2) CMA7



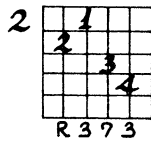
3) CMA7



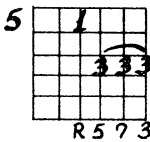
4) CMA7



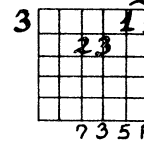
5) CMA7



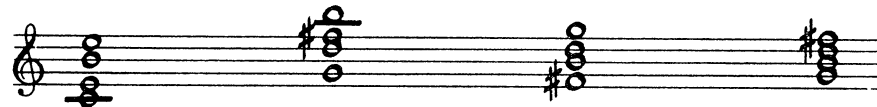
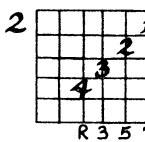
6) GMA7



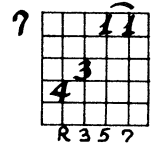
7) GMA7



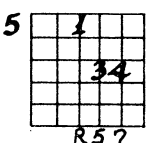
8) GMA7



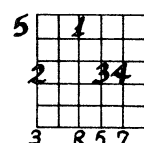
9) GMA7



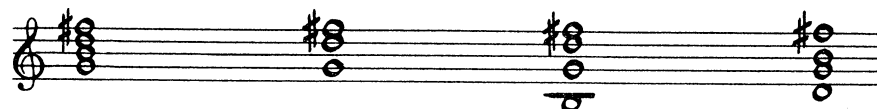
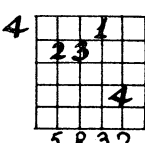
10) GMA7



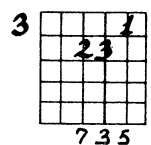
11) GMA7



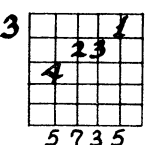
12) GMA7



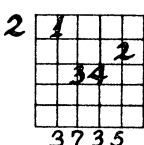
13) GMA7



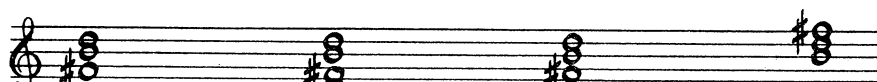
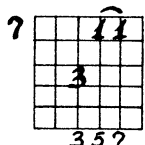
14) GMA7



15) GMA7

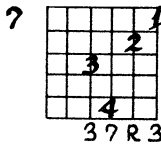


16) GMA7

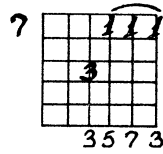




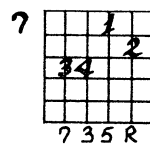
17) **GMA7**



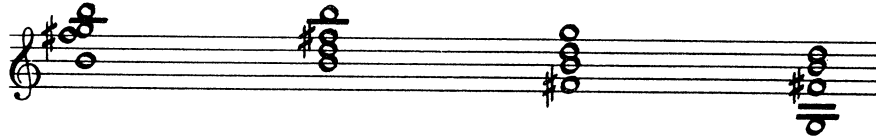
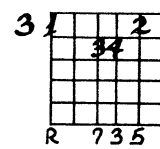
18) **GMA7**



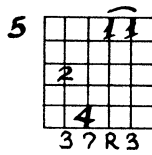
19) **GMA7**



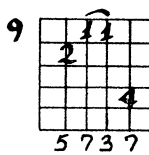
20) **GMA7**



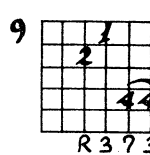
21) **CMA7**



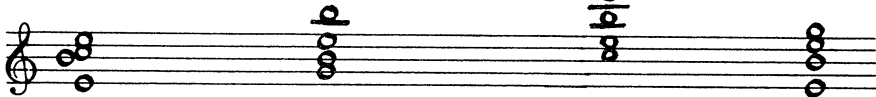
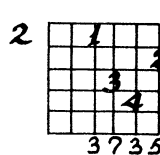
22) **CMA7**



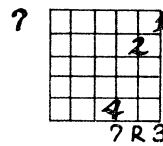
23) **CMA7**



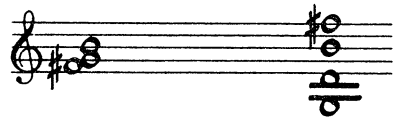
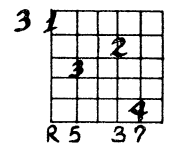
24) **CMA7**



25) **GMA7**



26) **GMA7**



# • MAJOR 7 EXAMPLES

- Have a friend play the root note in the bass in order to hear the complete chord.

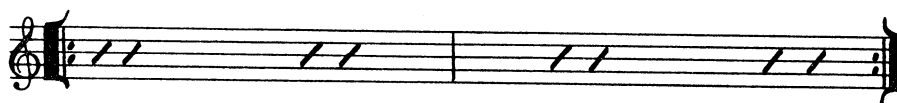
1) **CMA7** **C6** **Dm7** **G7**

5  $\overbrace{1111}^{\text{CMA7}}$  4  
5 R 3 7

5  $\overbrace{1111}^{\text{C6}}$   
5 R 3 6

6  $\overbrace{231}^{\text{Dm7}}$  4  
5 R b3 b7

5  $\overbrace{122}^{\text{G7}}$  4  
R 5 b7 3



2) **CMA7** **C6** **Dm7** **G7**

3  $\overbrace{123}^{\text{CMA7}}$  4  
5 7 3 5

5  $\overbrace{3333}^{\text{C6}}$   
5 R 3 6

3  $\overbrace{111}^{\text{Dm7}}$  4  
b3 b7 R 5

3  $\overbrace{111}^{\text{G7}}$  2  
b7 3 5 R



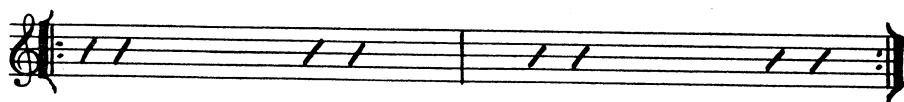
3) **CMA7** **C6** **Dm7** **G7**

5  $\overbrace{11}^{\text{CMA7}}$  4  
7 R 3

5  $\overbrace{11}^{\text{C6}}$  3  
6 R 3

6  $\overbrace{21}^{\text{Dm7}}$  4  
b7 R b3

6  $\overbrace{21}^{\text{G7}}$  4  
3 5 b7



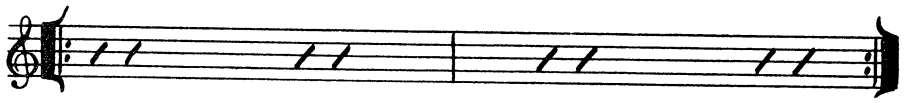
4) **CMA7** **C6** **Dm7** **G7**

3  $\overbrace{123}^{\text{CMA7}}$  4  
R 5 7 3

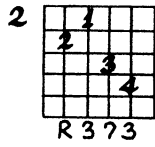
2  $\overbrace{111}^{\text{C6}}$  4  
R 3 6 3

3  $\overbrace{123}^{\text{Dm7}}$  4  
R b3 b7 b3

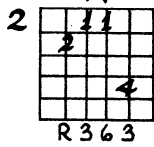
3  $\overbrace{112}^{\text{G7}}$  4  
5 b7 3 b7



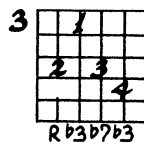
5) **CMA7**



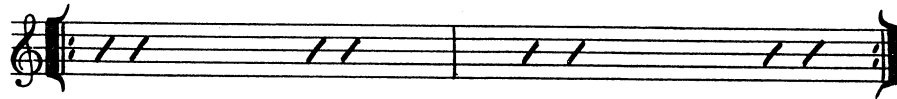
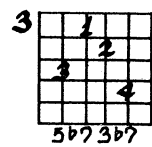
**C6**



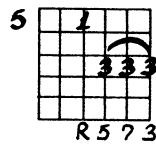
**Dm7**



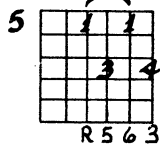
**G7**



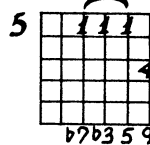
6) **GMA7**



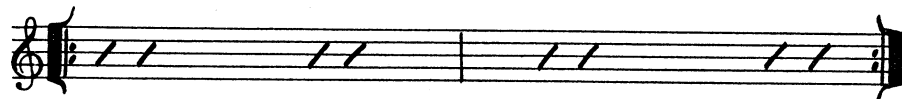
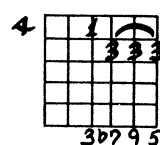
**G6**



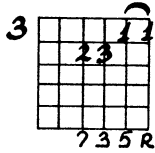
**Am9**



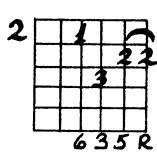
**D9**



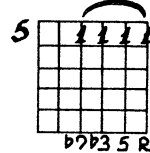
7) **GMA7**



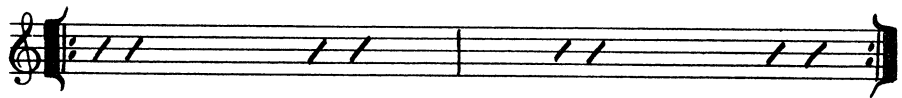
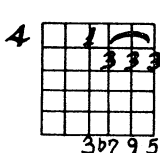
**G6**



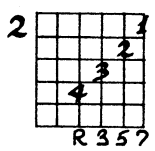
**Am7**



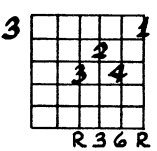
**D9**



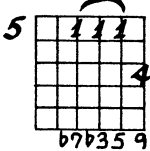
8) **GMA7**



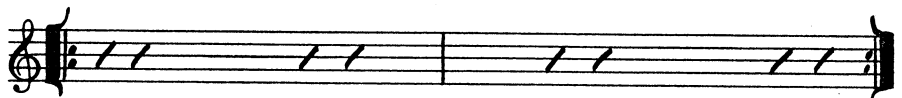
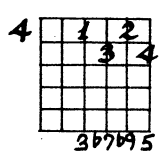
**G6**



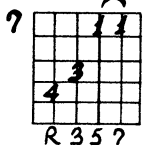
**Am9**



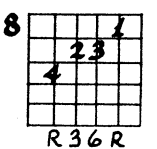
**D7(-9)**



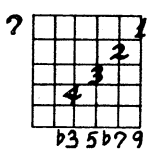
9) **GMA7**



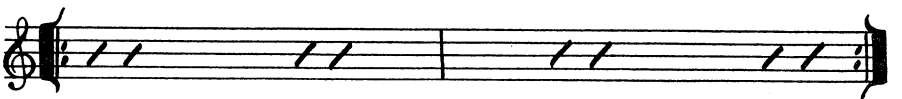
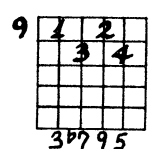
**G6**



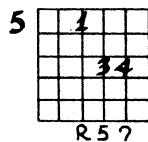
**Am9**



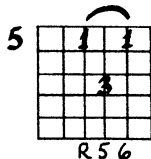
**D9**



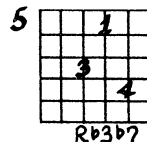
10) **GMA7**



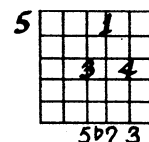
**G6**



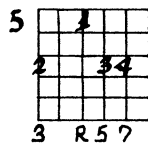
**Am7**



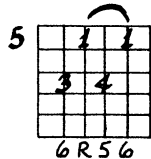
**D7**



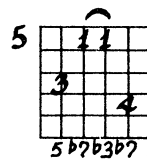
11) **GMA7**



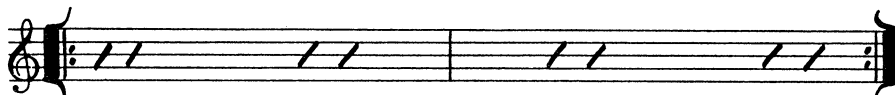
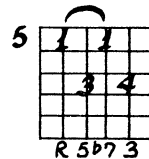
**G6**



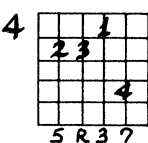
**Am7**



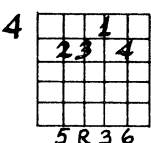
**D7**



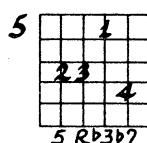
12) **GMA7**



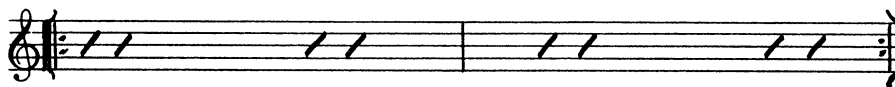
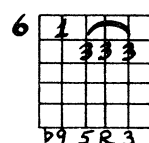
**GMA6**



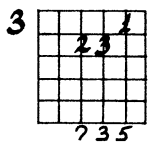
**Am7**



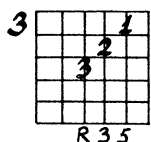
**D(-9)**



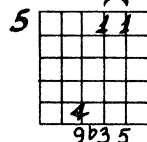
13) **GMA7**



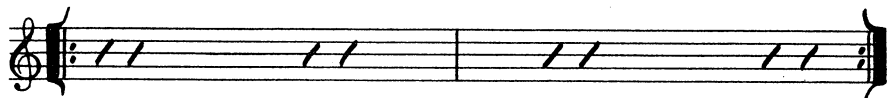
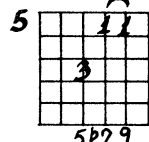
**G**



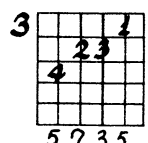
**Am9**



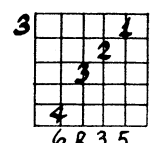
**D9**



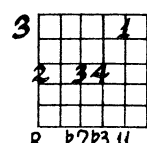
14) **GMA7**



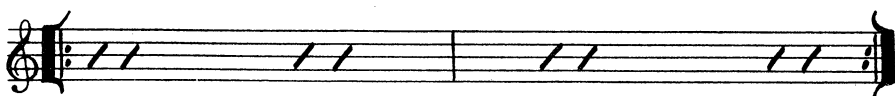
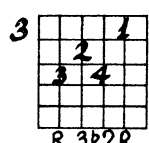
**G6**



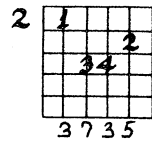
**Am11**



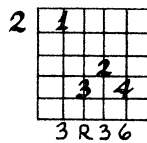
**D7**



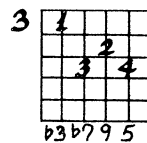
15) **GMA7**



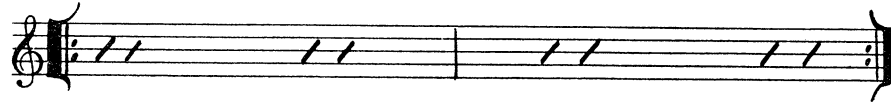
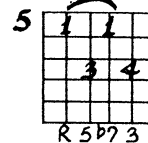
**G6**



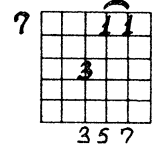
**Am9**



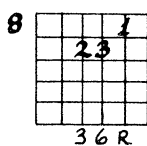
**D7**



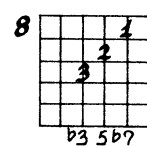
16) **GMA7**



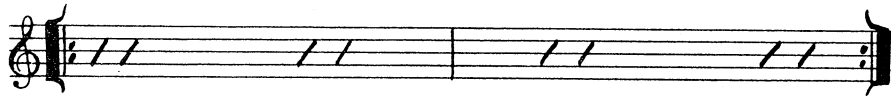
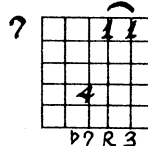
**G6**



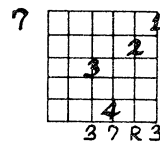
**Am7**



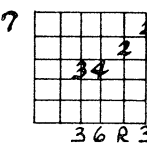
**D7**



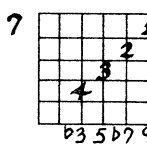
17) **GMA7**



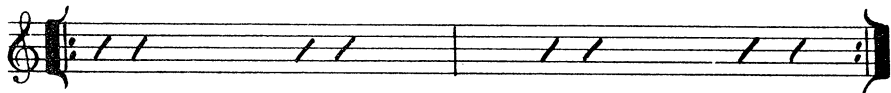
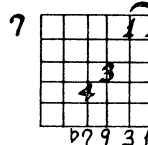
**G6**



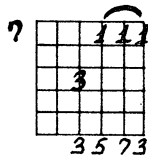
**Am9**



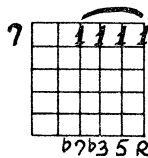
**D13**



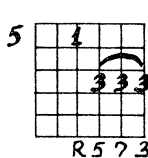
18) **GMA7**



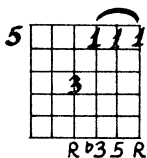
**Bm7**



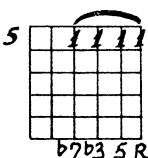
**GMA7**



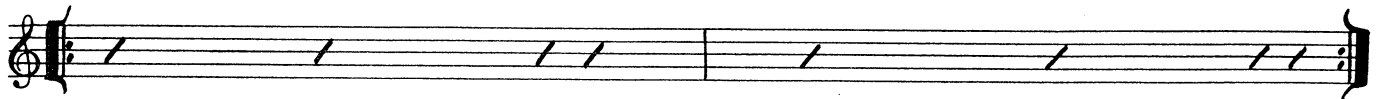
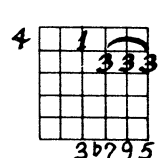
**Am**



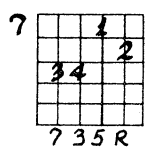
**Am7**



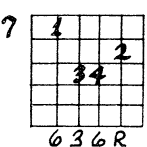
**D9**



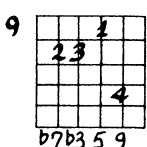
19) **GMA7**



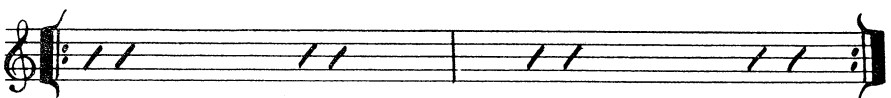
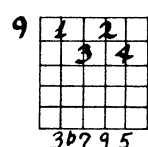
**G6**



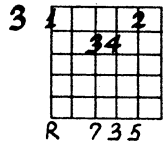
**Am9**



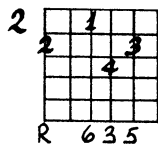
**D9**



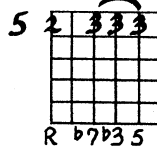
20) **GMA7**



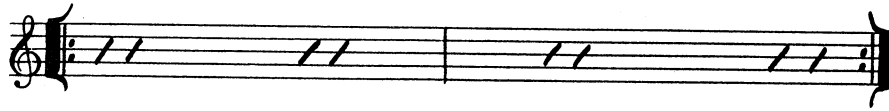
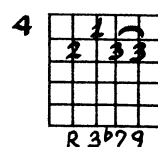
**G6**



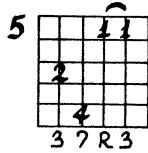
**Am7**



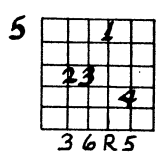
**Dm**



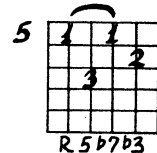
21) **CMA7**



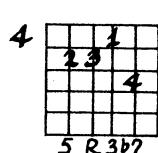
**C6**



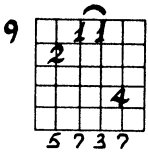
**Dm7**



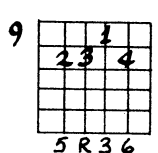
**G7**



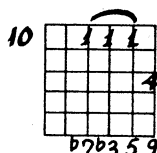
22) **CMA7**



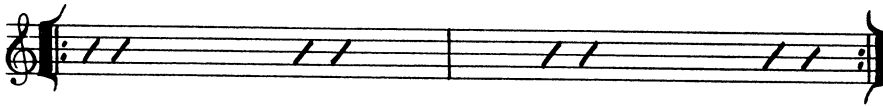
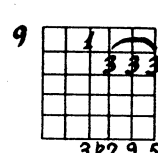
**C6**



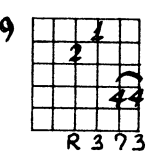
**Dm9**



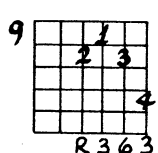
**G9**



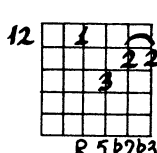
23) **CMA7**



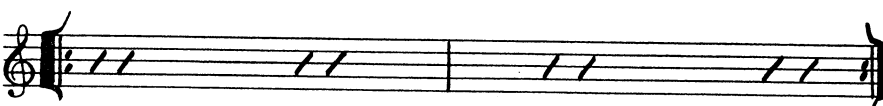
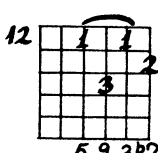
**C6**



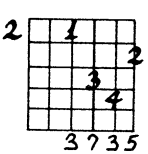
**Dm7**



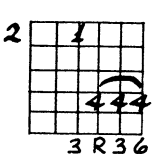
**G9**



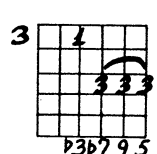
24) **CMA7**



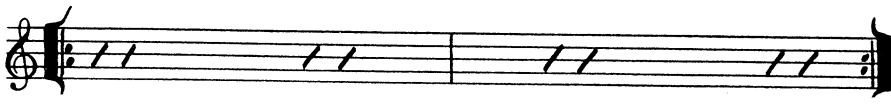
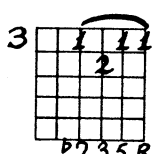
**C6**



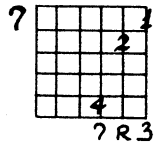
**Dm11**



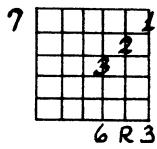
**G7**



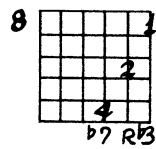
25) **GMA7**



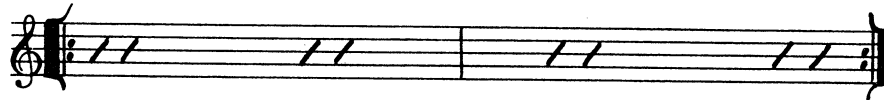
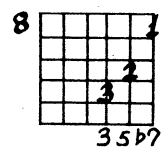
**G6**



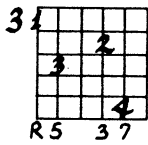
**Am7**



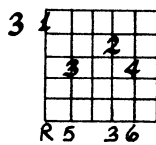
**D7**



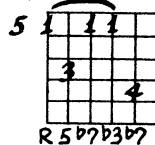
26) **GMA7**



**G6**



**Am7**



**D7**

